

The VCDS CANbus coder is essential equipment for towbar fitters installing interactive CANbus modules on VAG vehicles (Audi, Seat, Skoda and VW).

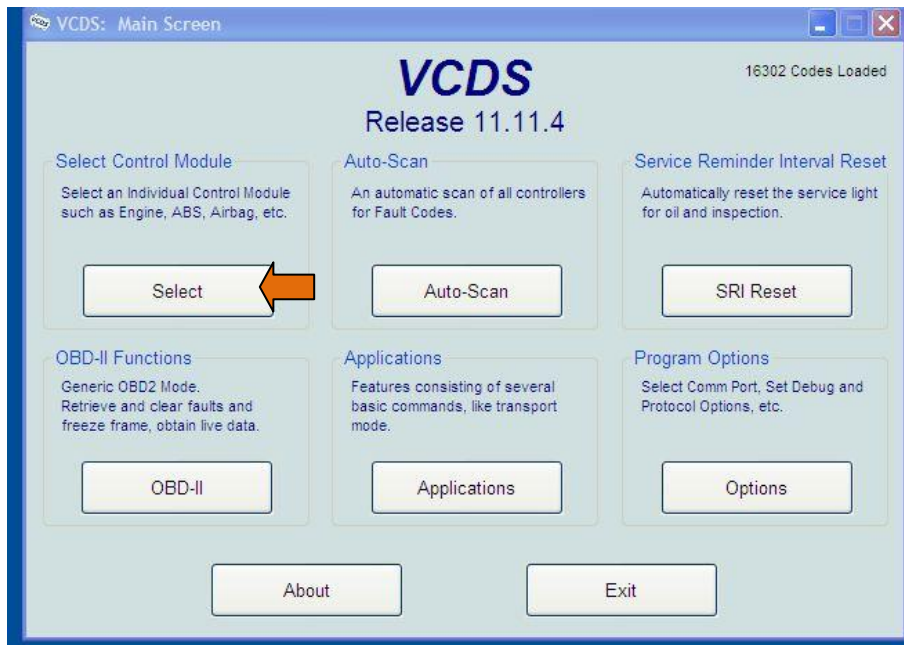
The following pages take you, step by step, through the recoding process, with each page clearly illustrated with pictures of the screens you will see.



SEE NOTES IN EACH SECTION SHOWING MODEL-SPECIFIC VARIATIONS

Plug the VCDS OBDII plug into the vehicle’s diagnostic socket and open VCDS on your laptop.

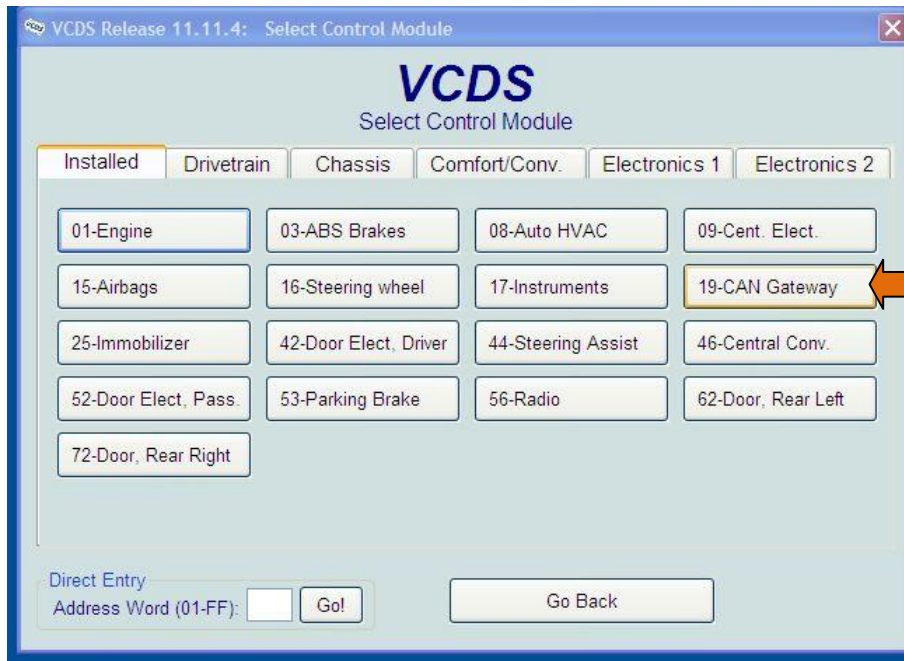
The following screen will appear:



Click on **Auto Scan** and note all existing fault codes

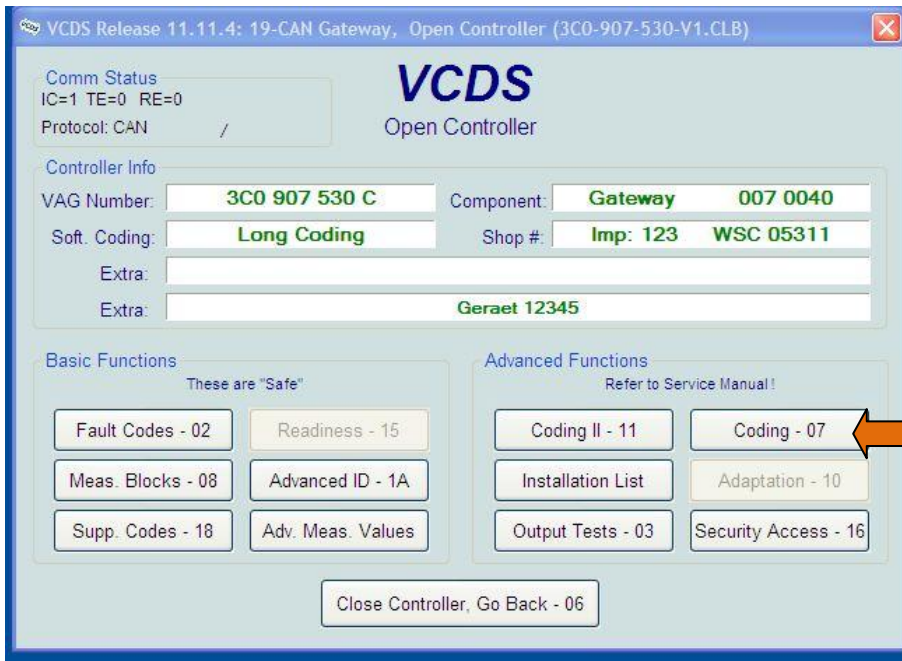
Then click on **SELECT**

The following screen will appear:



Click on **19-CAN Gateway**

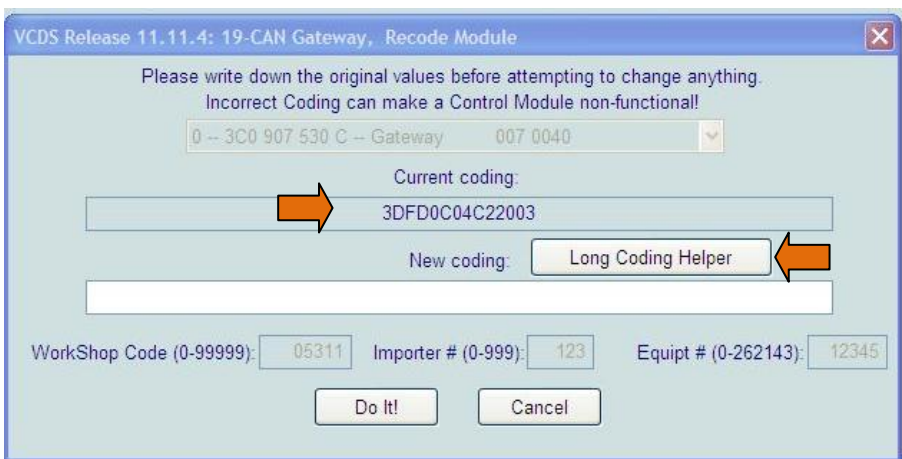
The following screen will appear (NEXT PAGE)



Click on **CODING 07**

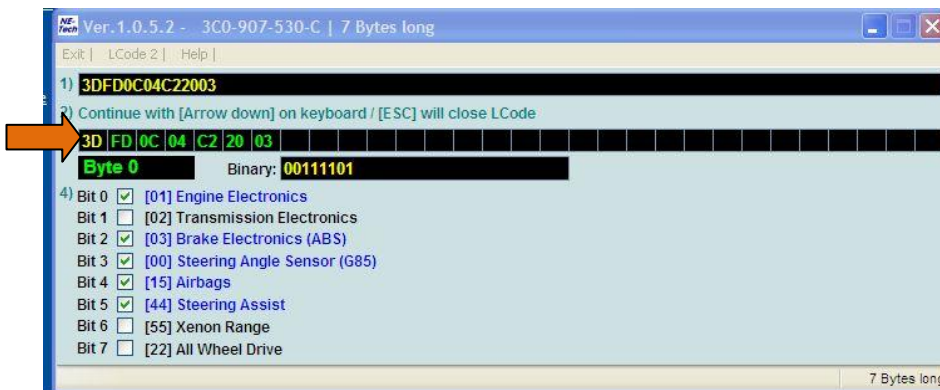
The following screen will appear:

Write down the current coding so you can restore it if necessary



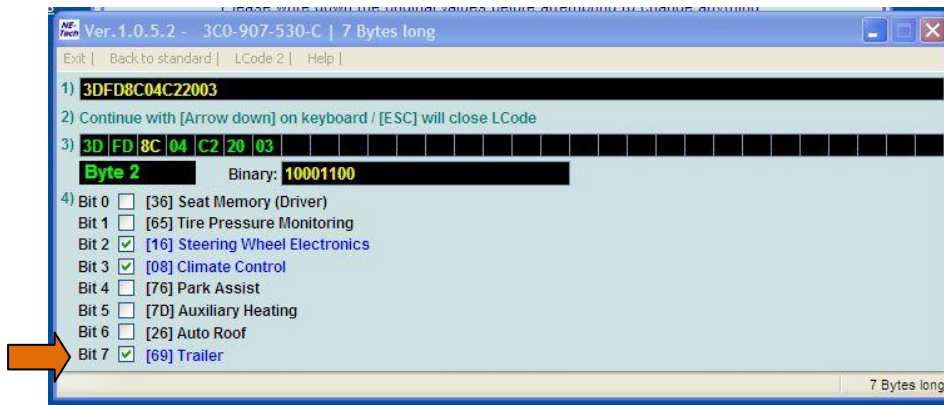
Click on **LONG CODING HELPER**

The following screen will appear:



In line 3, click each code (3D, FD, 0C, etc) in turn until a screen appears in which **Bit 7** shows **69-TRAILER** (See illustration on next page)

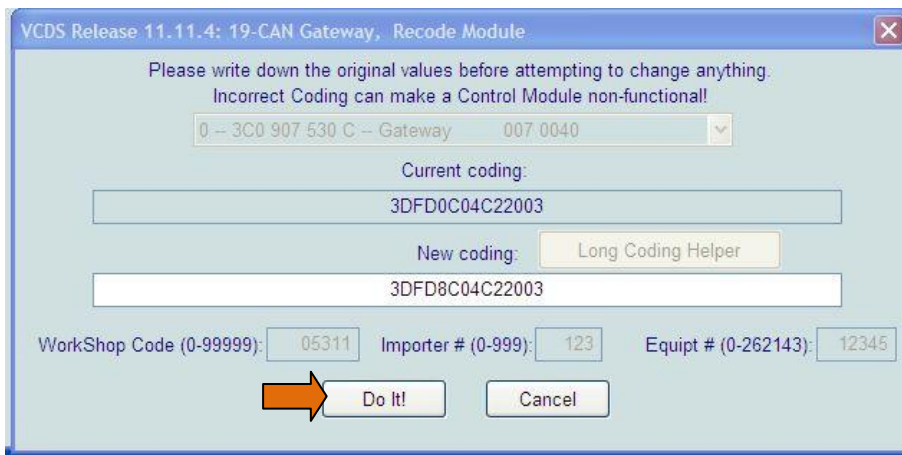
The screen is below



Tick the box in **Bit 7 [69] Trailer** (Note: If the box is already ticked, the car is already coded for towing. Also note that some boxes are already ticked.)

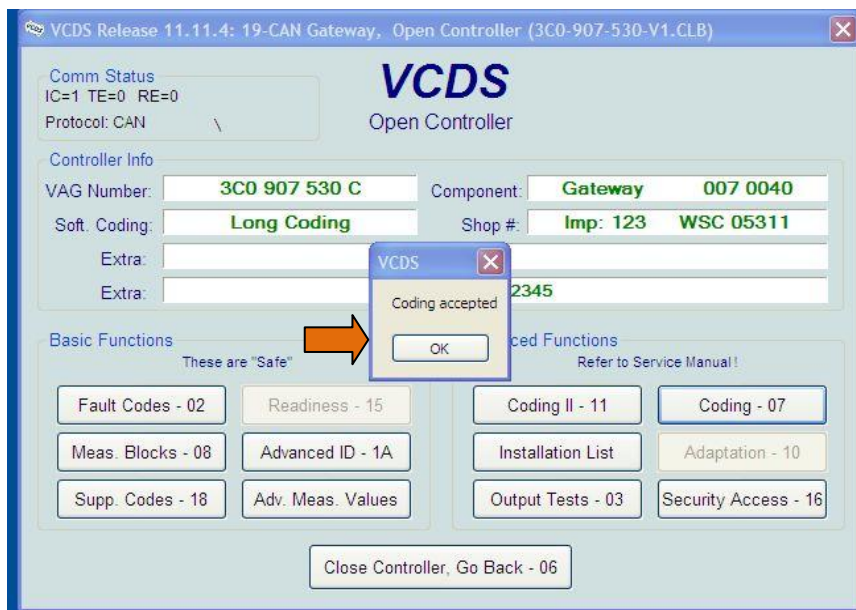
Close the Long Code Helper box

The following screen will appear:



Click **DO IT**

The following screen will appear, showing that your coding has been accepted.



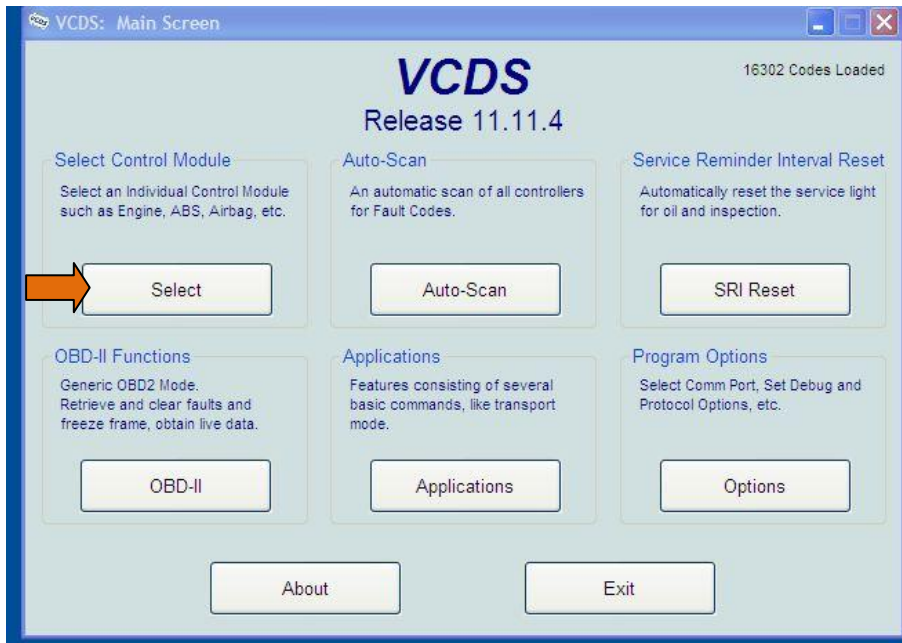
Close the controller.

See following pages for Parking Brake and PDC coding

Parking Brake Coding Check

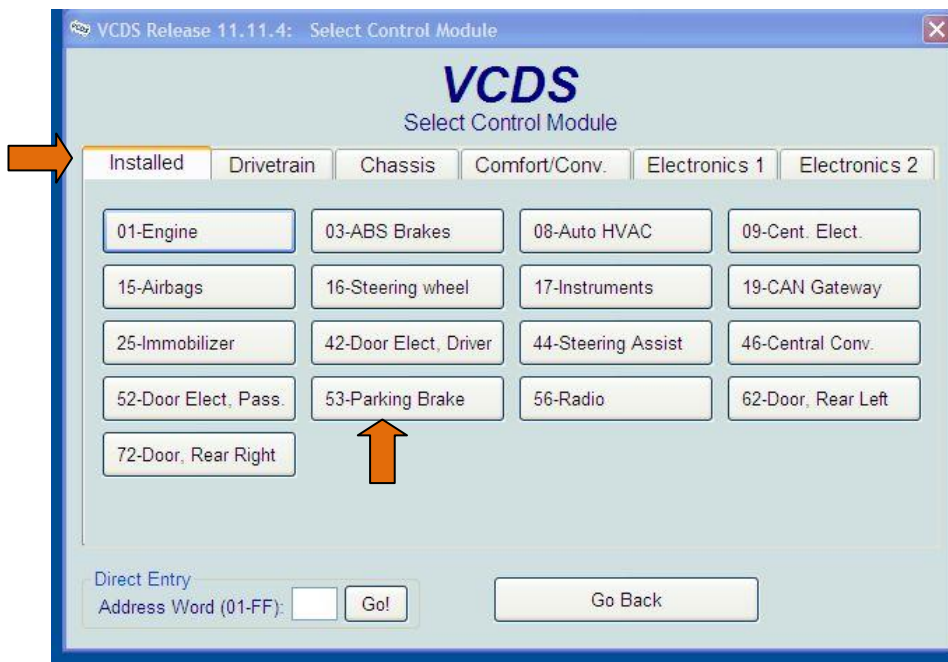
THIS ONLY APPLIES TO VEHICLES WITH ELECTRONIC PARKING BRAKE

On the main menu screen click **SELECT**



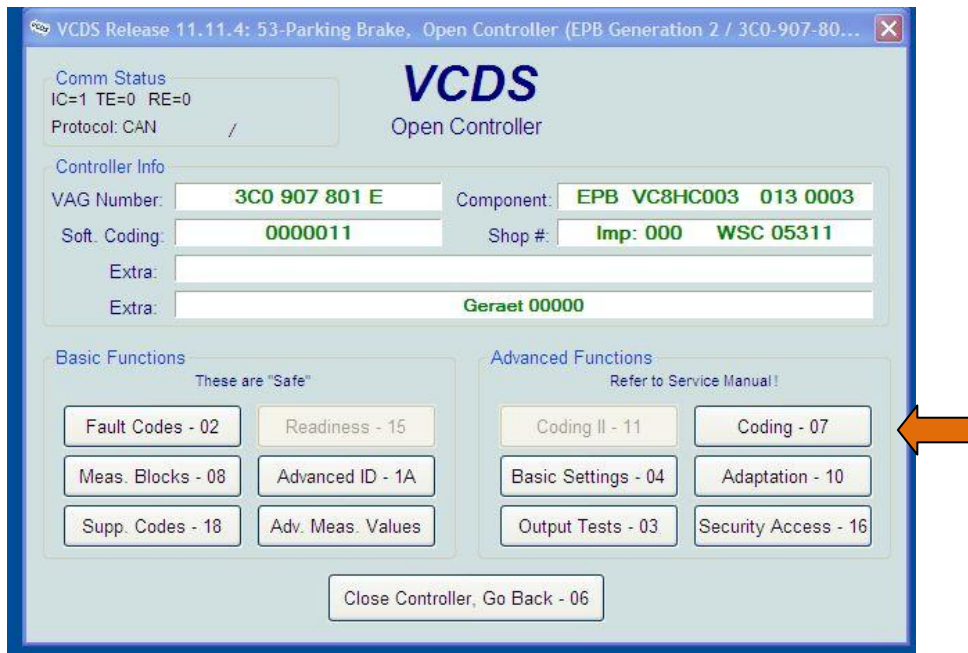
The following screen will appear.

Select **INSTALLED**



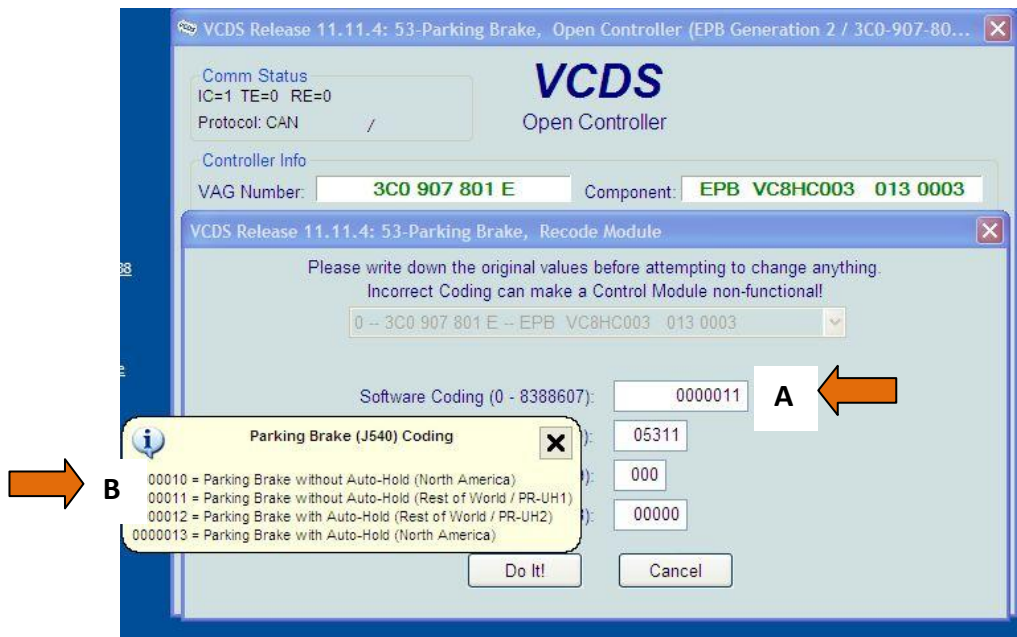
Click **53-PARKING BRAKE**

The following screen will appear



Click on **CODING – 07**

The following screen will appear



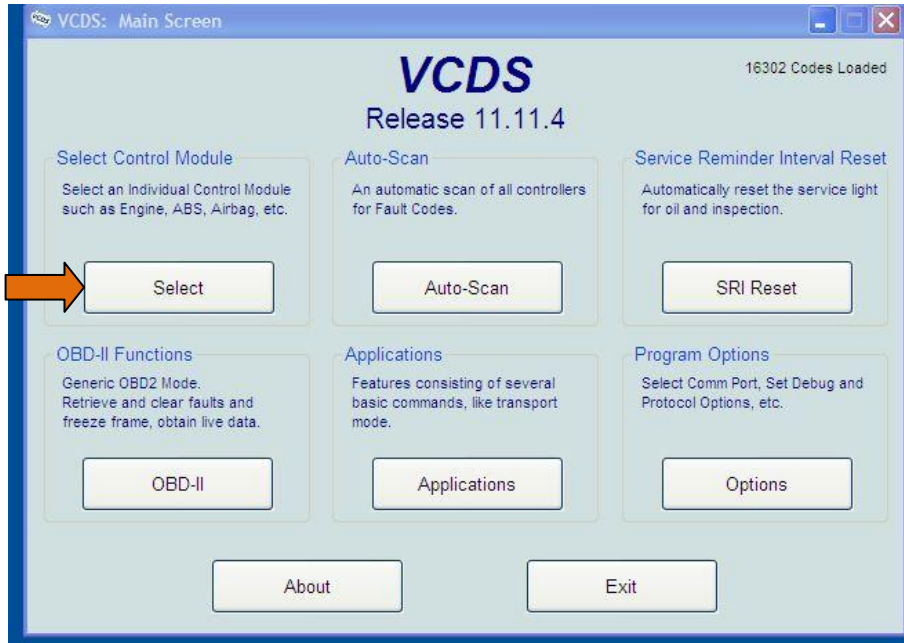
Check that the Software coding (A) matches what is indicated in the white box (B)
 e.g. Parking Brake without Auto-Hold (Rest of World)
 or Parking Brake with Auto-Hold (Rest of World)

PDC coding is on the pages following

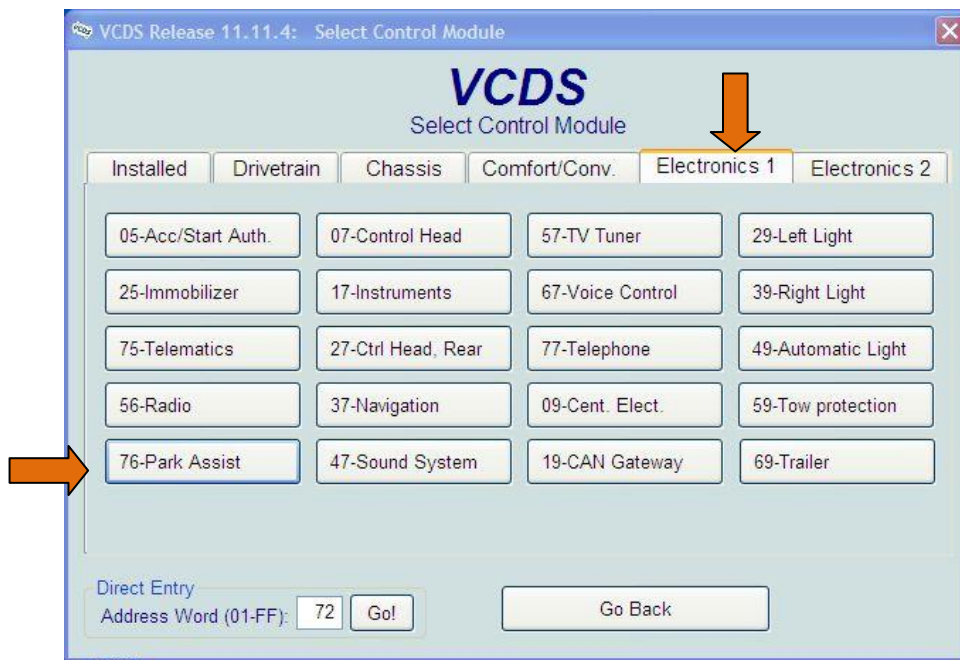
PDC coding (to switch off factory rear PDC when towing)

(Note: Golf, Golf Plus, Jetta, Touran : See additional information at the end of this document)

On the main menu screen click **SELECT**

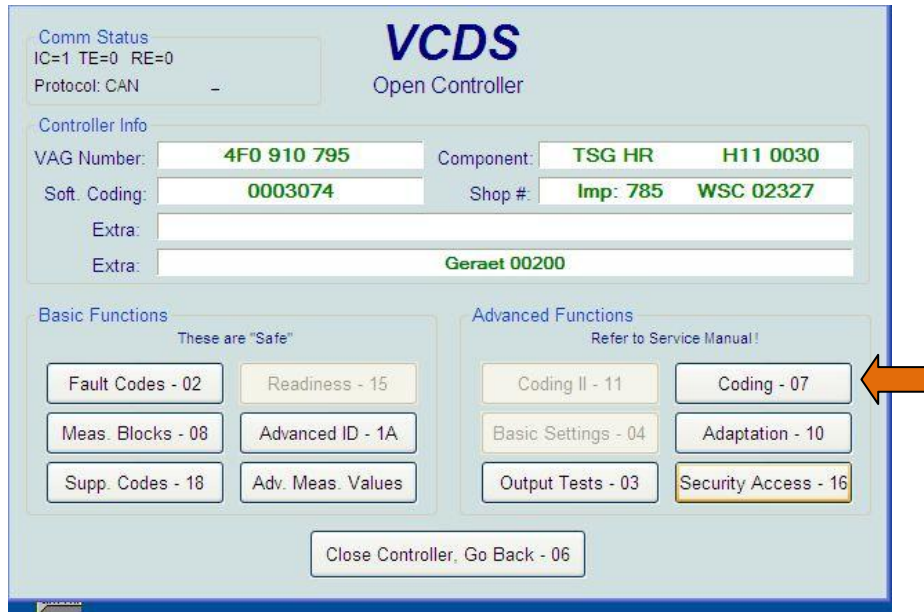


Click on THE **Electronics 1** tab



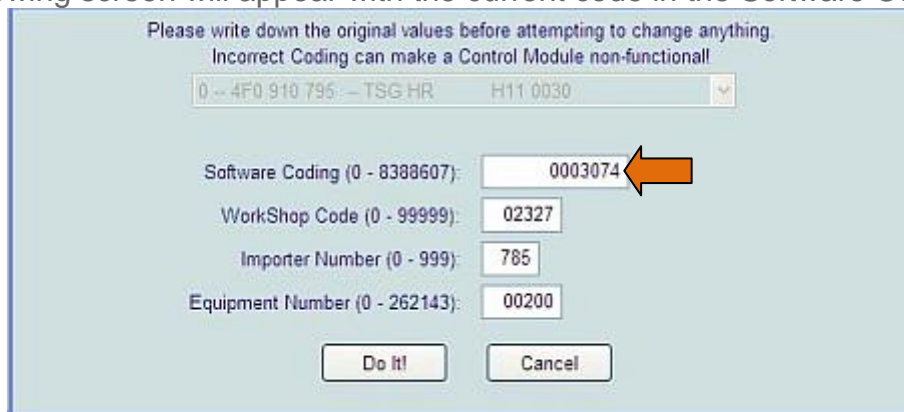
Select **76-Park Assist**

If the car has Park Assist installed the screen on the next page will appear:
(If it is not installed, the vehicle will give a fail message)



Select CODING - 07

The following screen will appear with the current code in the Software Coding box

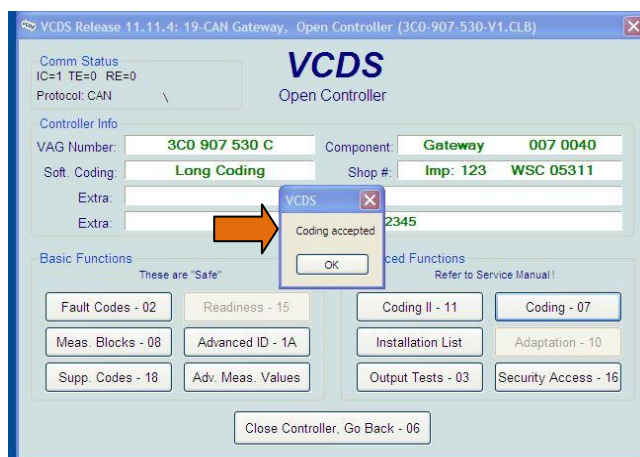


Write down the current code. If the 5th digit from the right is 0*, add 10,000 to the code.
(Touran only, add 1,000,000)
(*If the car is already coded, the fifth digit from the right will already be 1.)

Type the new code into the Software Coding Box

Click **DO IT**

The following screen will appear, showing that your coding has been accepted.



Close the controller.

Quality – Service – Innovation

sales@rydertowing.co.uk